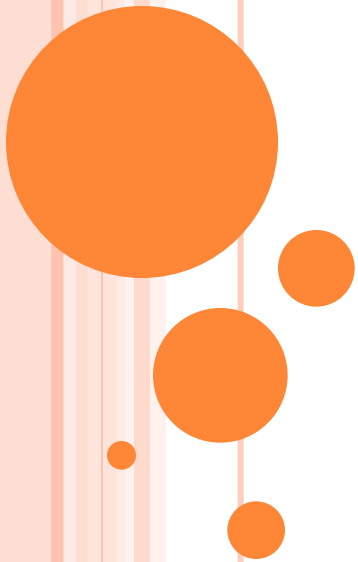


WATERBURY PUBLIC SCHOOLS

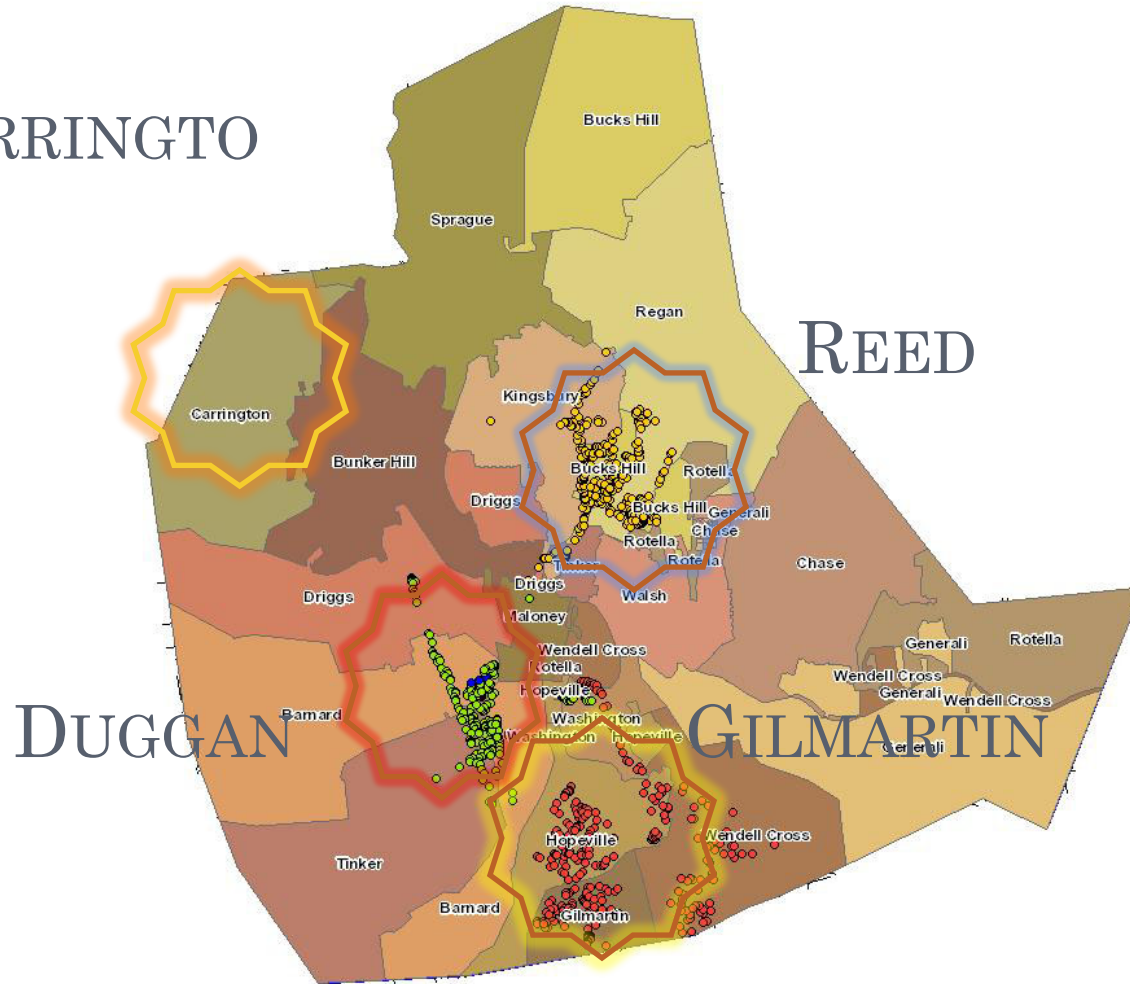
Redistricting Plan

Reed School



NEIGHBORHOOD SCHOOL CONCEPT

CARRINGTON
N



CRITERIA

- Student safety
- School size
- Class size
- Simplicity
- Walk zones
- Transportation efficiency



Goals

- Create true neighborhood schools
 - Schools within walking distance for most students
- Reduce current middle school population
- Reduce over crowding at large elementary schools

Effects of Redistricting

- Eliminate need for existing rental properties
- Reduce transportation costs
- Spur neighborhood redevelopment/revitalization



GILMARTIN ELEMENTARY 2010-2011

Grades K - 5							
	K	1	2	3	4	5	
BROOKLYN				1			1
BUCKS HILL		1					1
BUNKER HILL				1			1
CHASE	2	6	3	2	5	4	22
DRIGGS		1					1
GENERALI	11	13	11	8	13	12	68
GILMARTIN	20	7	6	15	15	15	78
HOPEVILLE	13	15	16	15	13	16	88
TINKER		1	1		2		4
WALSH	1	3	1		2	2	9
WASHINGTON	2	1		2	3	1	9
WENDELL CROSS	5	8	8	3	6	7	37
	54	56	46	47	59	57	319

Neighborhood went from 11 schools to 1 school



DUGGAN ELEMENTARY- 2011-2012

	K	1	2	3	4	5	6	
Barnard		27	27	30	22	22	25	153
Brooklyn		30	22	18	23	12	17	122
Bucks Hill		2						2
Bunker Hill	1					1		2
Chase				1				1
W Cross							1	1
Generali					1			1
Hopeville		4	3	2	3	3	1	16
Gilmartin	3							3
Kingsbury							1	1
Sprague	1							1
Tinker		3	3	8	4	1	3	22
Washington					1		1	2
Wilson	2						2	4
Carrington		1				1		2
	7	67	55	59	54	40	51	333

Neighborhood went from 15 schools to 1 school



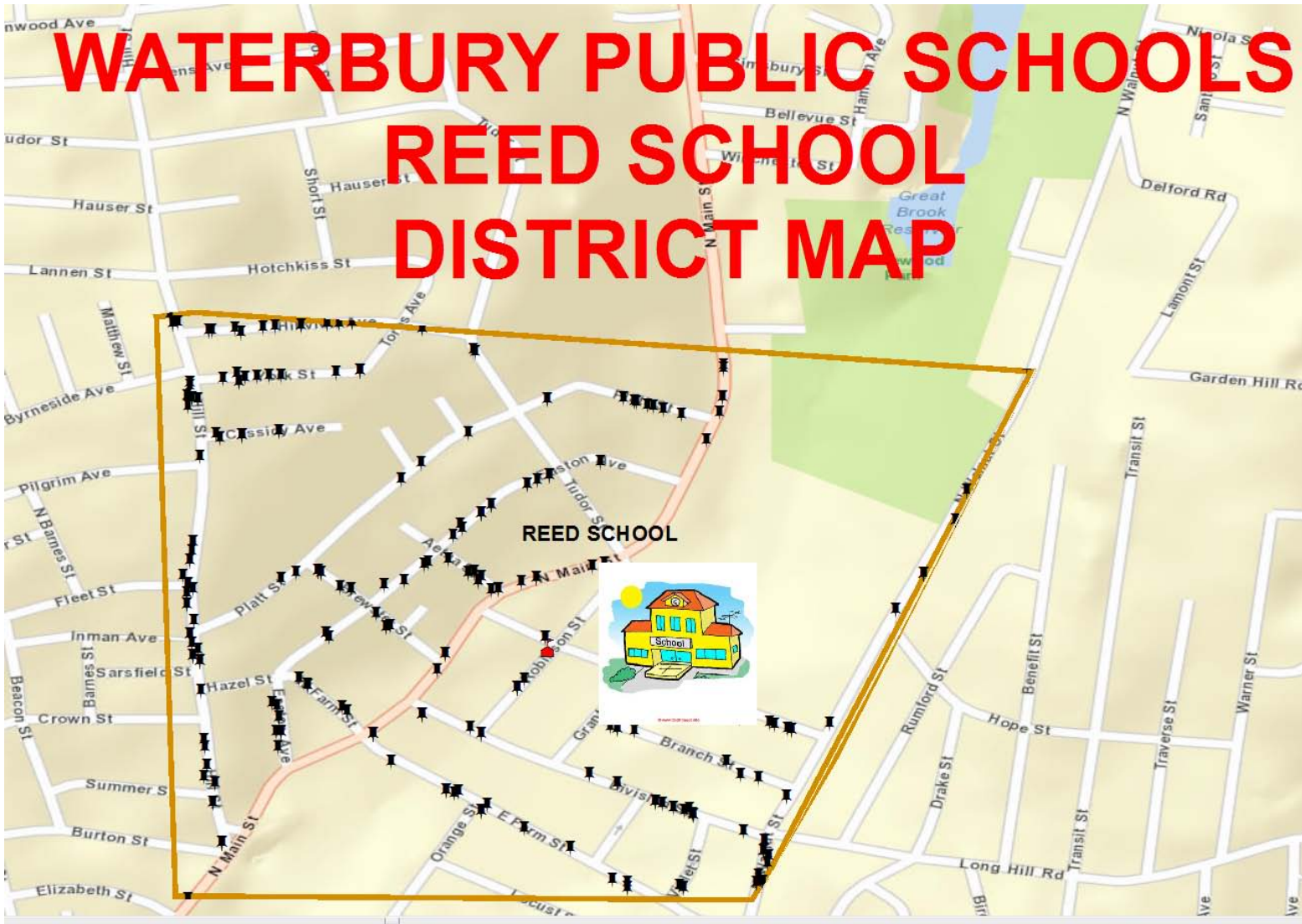
MIDDLE SCHOOL IMPACT

	Projected Enrollment Reduction				2010-2011 Enrollment	Current Enrollment
	6 th	7 th	8 th	Total		
W.S.M.S.	85	90	92	267	1221	1058
Wallace	22	29	17	68	1336	1221
N.E.M.S.	39	57	37	133	1200	1191
	146	176	146	485	3757	3470
						-287



REED SCHOOL 2012-2013

WATERBURY PUBLIC SCHOOLS REED SCHOOL DISTRICT MAP



REED SCHOOL 2012-2013

	<u>Gr K</u>	<u>Gr 1</u>	<u>Gr 2</u>	<u>Gr 3</u>	<u>Gr 4</u>	<u>Gr 5</u>	<u>Gr 6</u>	
Bucks Hill	1	36	40	29	17	19	24	166
Bunker Hill			1					1
Chase		2		1			1	4
Driggs	1							1
Generali					1			1
Kingsbury			1	2	1	2	3	9
Regan		9	8	12	5	7	10	51
Sprague				1	1			2
Tinker				1				1
Walsh	1	1		3	3	6	1	15
Wilson	6	3	4	1			3	17
Carrington		5	3	3	3	5	1	20
Total	9	56	57	53	31	39	43	288

Neighborhood went from 14 to 1 school



REED SCHOOL 2012-2013 STREET LIST

AETNA ST	12
BRANCH ST	9
BREWSTER ST	11
CASSIDY AVE	7
DIVISION ST	23
EAST FARM ST	19
EASTON AVE	26
GRIGGS ST	14
HAZEL ST	1
*HILL ST (1-244)	44
HILLVIEW AVE	18
*NORTH MAIN ST (452-1350)	21
*NORTH WALNUT ST (1-421)	30
PLATT ST	14
ROBINSON ST	5
TOROS AVE	7
*TUDOR ST (1-156)	7
VIOLET ST	3
WEST FARM ST	8
YORK ST	9

